

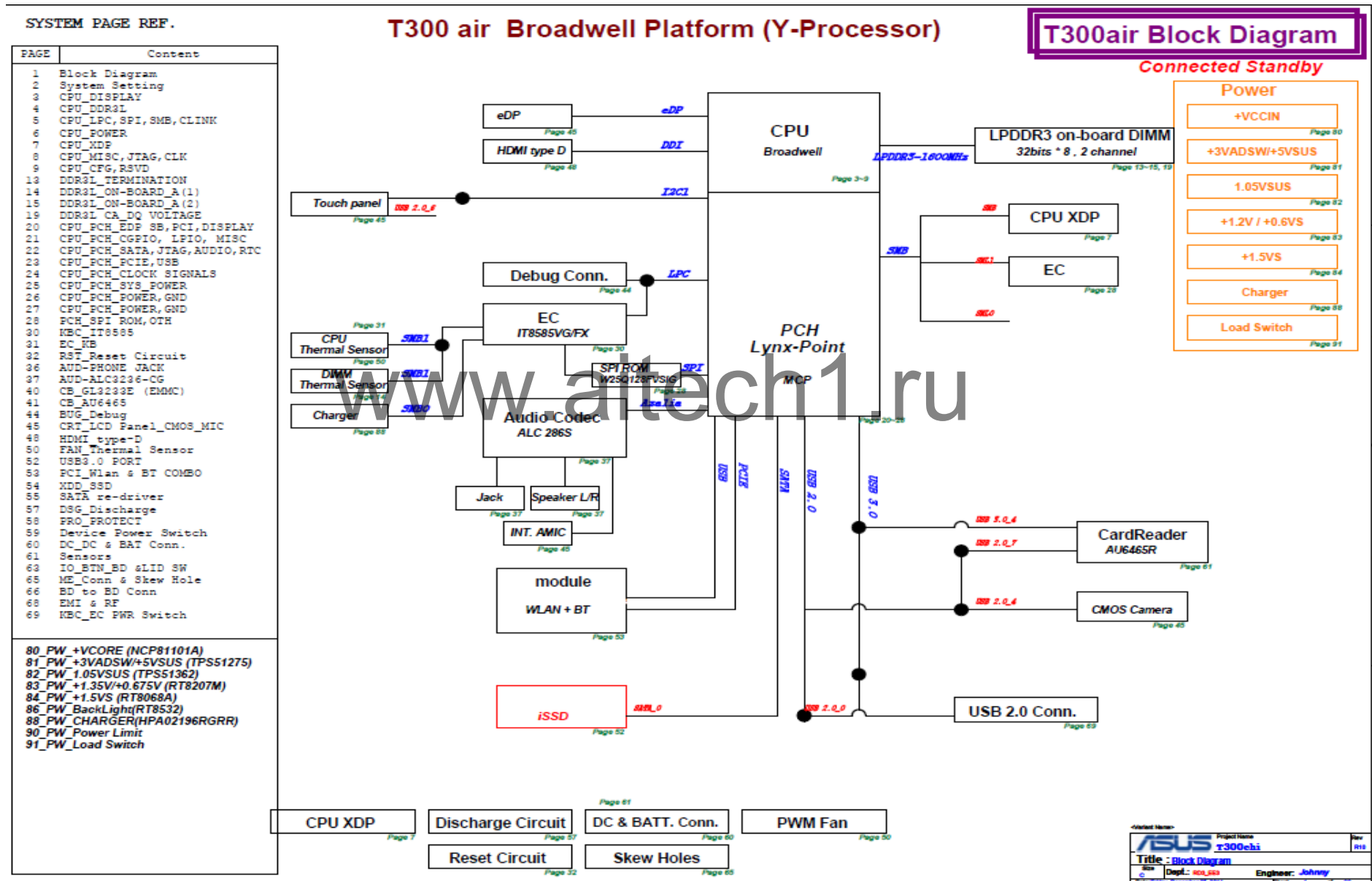
T300CHI Repair Guide

Feb/04/ 2015

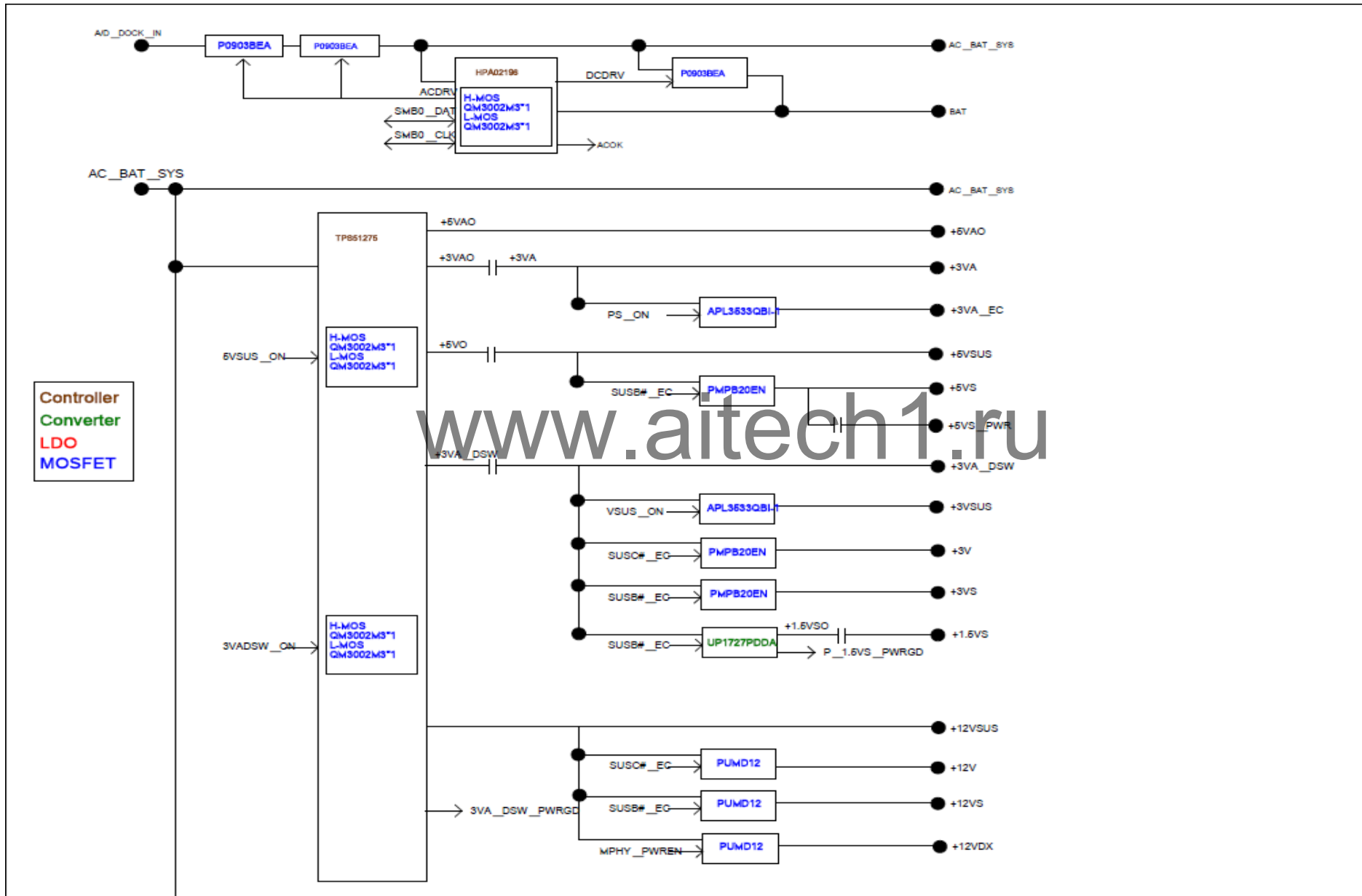
John_jin

GTSD

BLOCK DIAGRAM

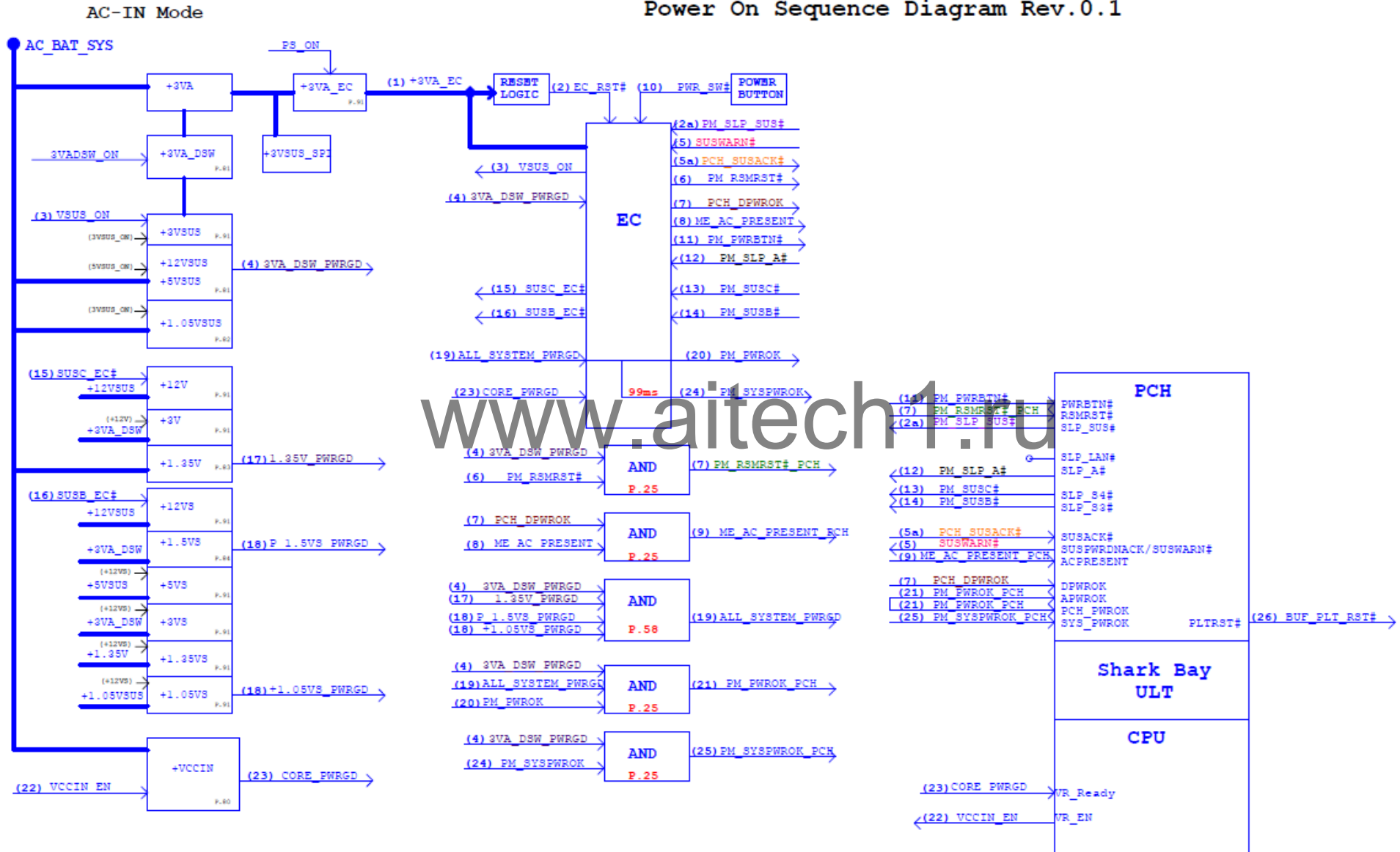


POWER FLOW



POWER ON SEQUENCE

Power On Sequence Diagram Rev.0.1



AC POWER ON SEQUENCE

Power-On Sequence
Timing Diagram Rev.0.1

AC-IN Mode

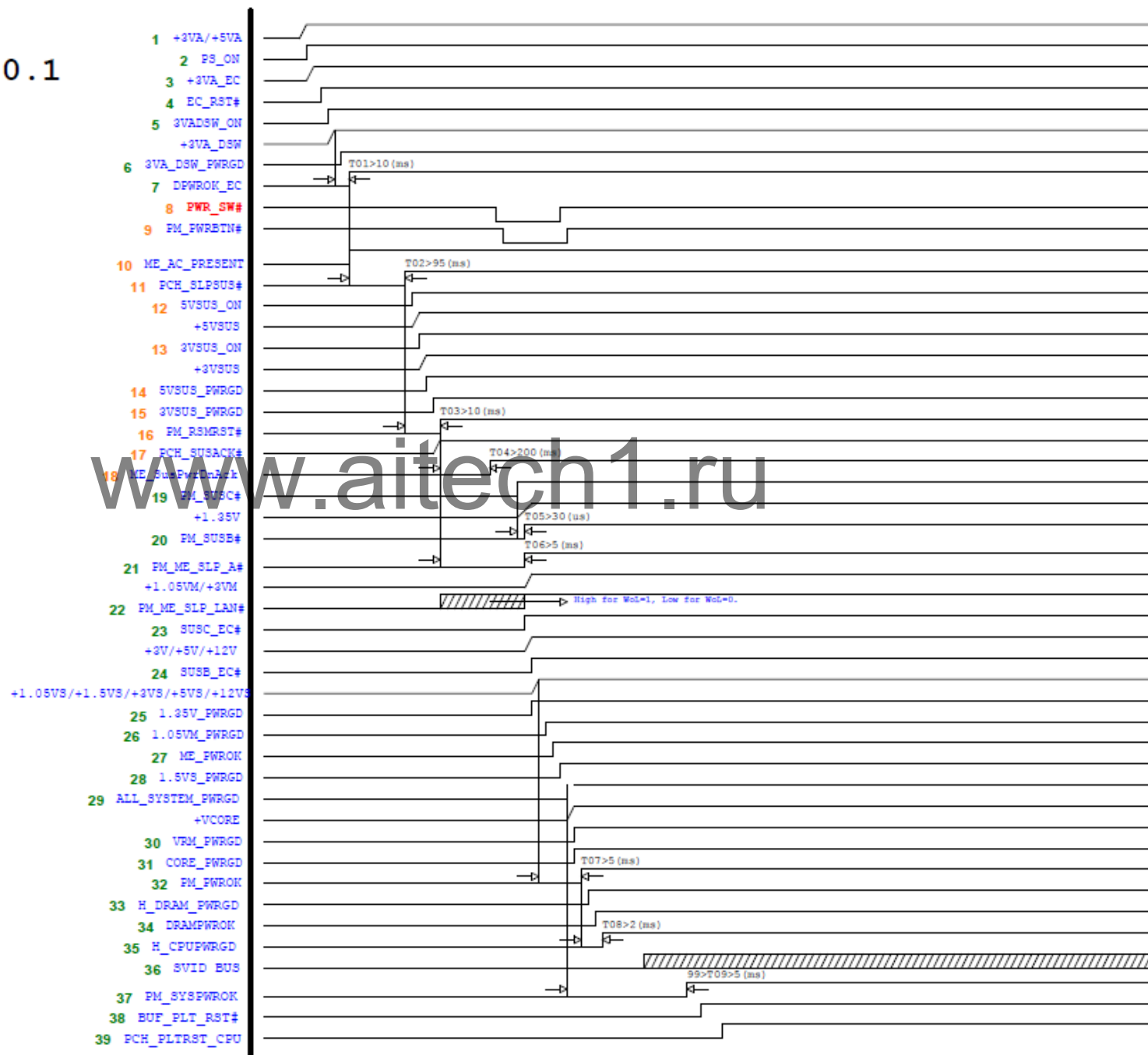


AC POWER ON SEQUENCE

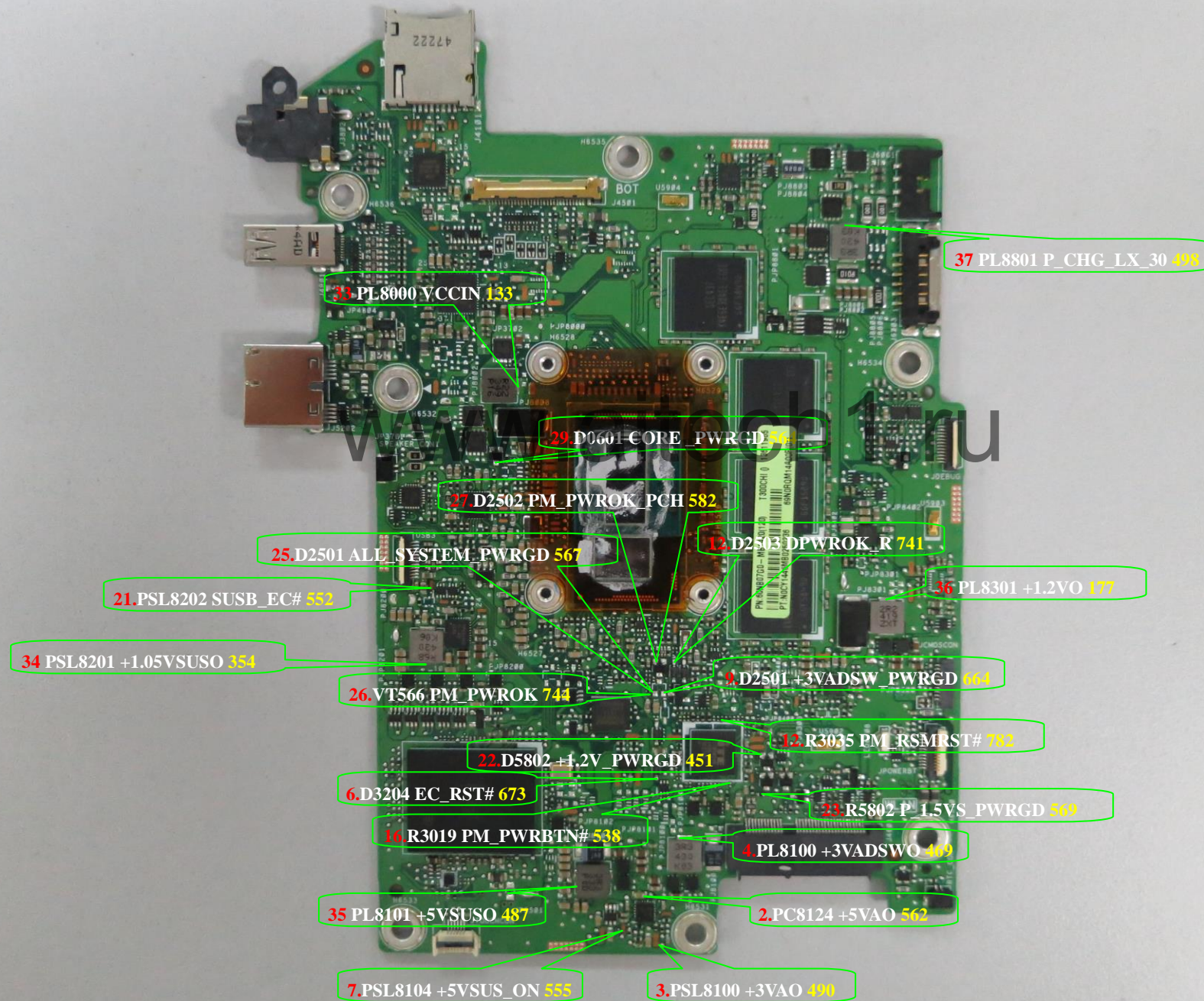
DC POWER ON SEQUENCE

Power-On Sequence Timing Diagram Rev.0.1

DC-IN Mode



Signal Measure Point-Bottom



www.eitech1.ru

Handwritten: H6537 757

Callouts:

- 1. VT763 AC_BAT_SYS 543
- 5. C3004 +3VA_EC 483
- 8. R3038 +3VSUS_ON 522
- 10. R3013 SUSWARN# 560
- 13. R2515 ME_AC_PRESENT 750
- 14. R2515 ME_AC_PRESENT_PCH 576
- 15. R0714 PWR_SW# 706
- 17. R2537 PM_SLP_A# 529
- 18. R3060 PM_SUSB# 467
- 19. VT495 PCH_SUSACK# 526
- 20. VT698 SUSC_EC# 610
- 24. C0731 +1.05VS_PWRGD 569
- 28. VT573 VCCIN_EN 317
- 30. R2513 PM_SYSPWROK 585
- 31. R2513 PM_SYSPWROK_PCH 585
- 32. R0702 BUF_PLT_RST# 616
- 39. VT575 PM_SUSC# 545

Other visible text on motherboard: H6537, TOP, J8701, H6578, H6538, dynamic, E150630, 940-0, REV. 1.2, PCB MADE IN TAIWAN, T35H, COM1, H6539, J3102.

Signal Measure Point-Docking Bottom



Signal Measure Point-Docking Top

